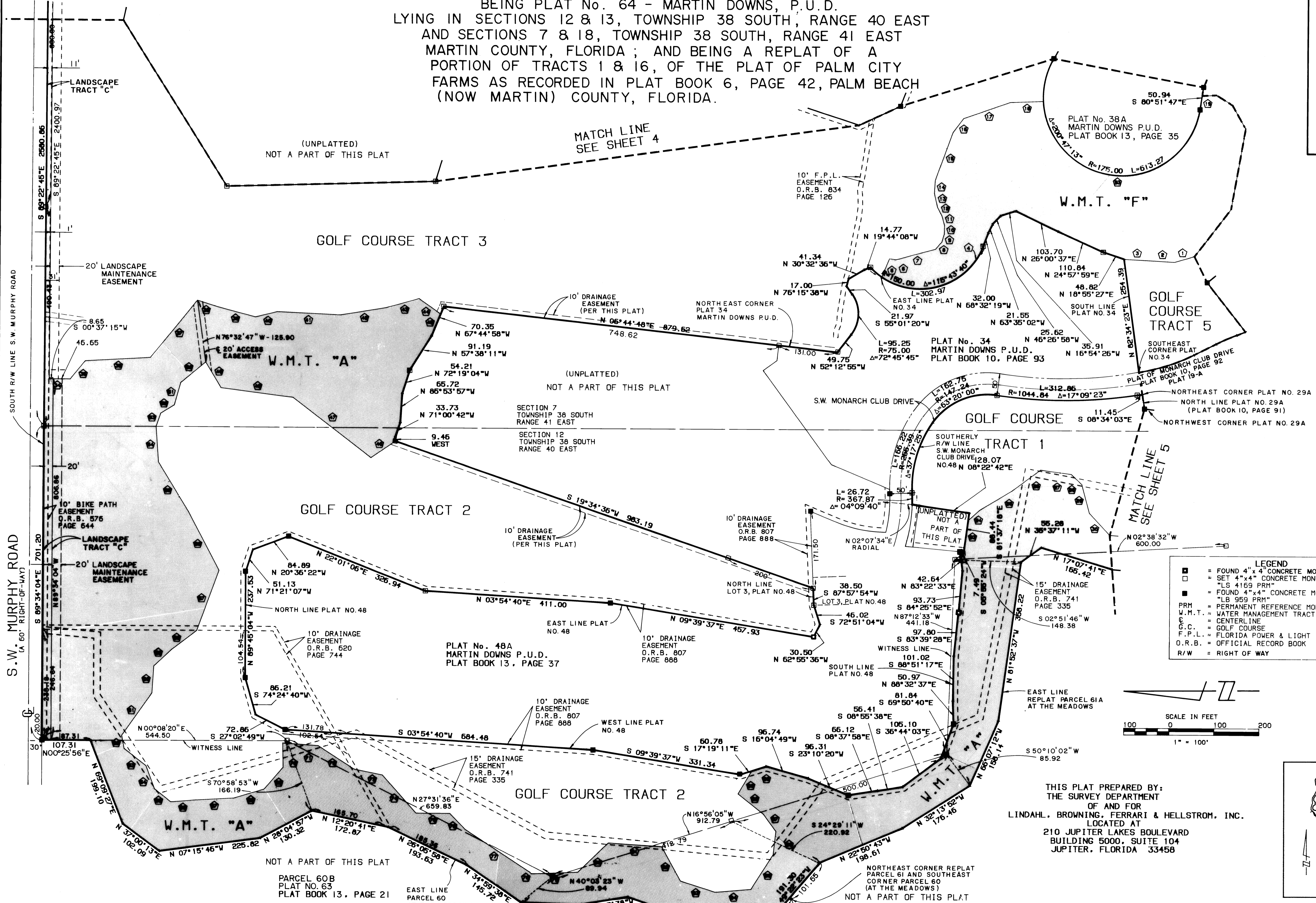


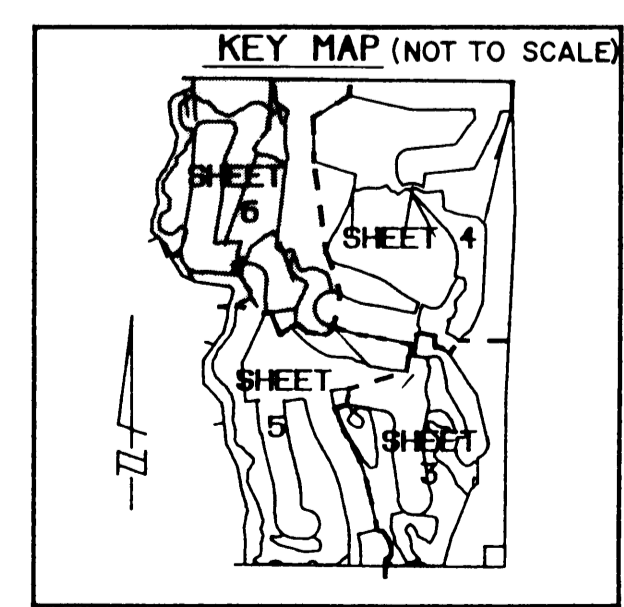
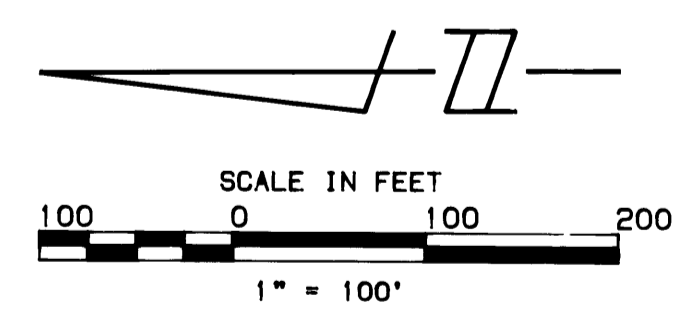
A PLAT OF MONARCH GOLF COURSE

BEING PLAT No. 64 - MARTIN DOWNS, P.U.D.
LYING IN SECTIONS 12 & 13, TOWNSHIP 38 SOUTH, RANGE 40 EAST
AND SECTIONS 7 & 18, TOWNSHIP 38 SOUTH, RANGE 41 EAST
MARTIN COUNTY, FLORIDA; AND BEING A REPLAT OF A
PORTION OF TRACTS 1 & 16, OF THE PLAT OF PALM CITY
FARMS AS RECORDED IN PLAT BOOK 6, PAGE 42, PALM BEACH
(NOW MARTIN) COUNTY, FLORIDA.

Plat Book 13 Pg. 54



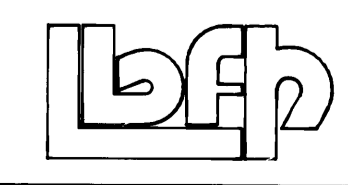
- LEGEND**
- = FOUND 4" x 4" CONCRETE MONUMENT (NO NUMBER)
 - = SET 4" x 4" CONCRETE MONUMENT WITH DISC
 - = "LS 4159 PRM"
 - = FOUND 4" x 4" CONCRETE MONUMENT WITH DISC
 - = "LB 959 PRM"
 - PRM = PERMANENT REFERENCE MONUMENT
 - W.M.T. = WATER MANAGEMENT TRACT
 - C.L. = CENTERLINE
 - G.C. = GOLF COURSE
 - F.P.L. = FLORIDA POWER & LIGHT
 - O.R.B. = OFFICIAL RECORD BOOK
 - R/W = RIGHT OF WAY



THIS PLAT PREPARED BY:
THE SURVEY DEPARTMENT
OF AND FOR
LINDAHL, BROWNING, FERRARI & HELLSTROM, INC.
LOCATED AT
210 JUPITER LAKES BOULEVARD
BUILDING 5000, SUITE 104
JUPITER, FLORIDA 33458

NOTICE: THERE MAY BE ADDITIONAL RESTRICTIONS THAT ARE NOT RECORDED ON THIS PLAT THAT MAY BE FOUND IN THE PUBLIC RECORDS OF THIS COUNTY.

SEE SHEET 7 OF 7 FOR TABLED ANNOTATION



LINDAHL, BROWNING, FERRARI & HELLSTROM, INC.
CONSULTING ENGINEERS, PLANNERS & SURVEYORS

BLDG. 5000, SUITE 104 10 CENTRAL PARKWAY 2222 COLONIAL ROAD
SUITE 201
210 JUPITER LAKES BLVD. SUITE 420 STUART, FL. 34997 FT. PIERCE, FL. 34909
JUPITER, FL. 33458 407-745-9246 407-288-3883 407-461-2400

6 7